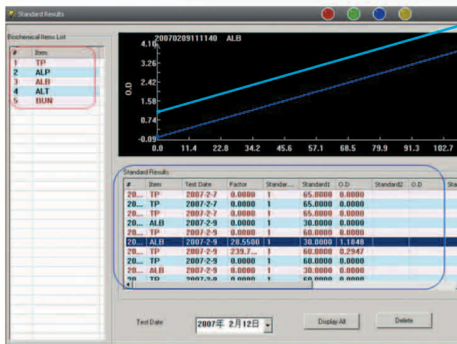


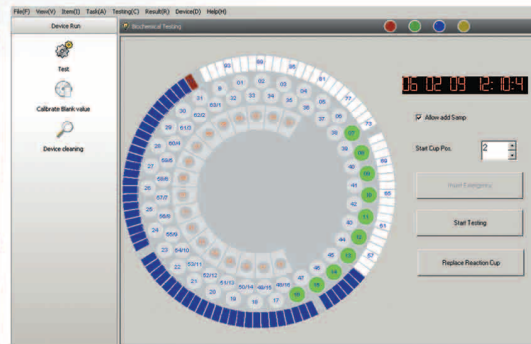
Fully Automatic Biochemistry Auto Analyzer

Main Specifications

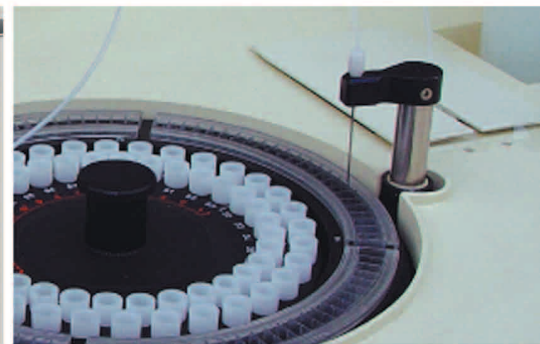
- Random access
- End point, kinetic, fixed time, differential, bichromatic, immunoturbidimetric, 1-2 reagents assays multi-standart reading methods.
- Intelligent, user friendly interface, multitasking software.
- Completely open software for reagents applications and ready Archem reagent application inserts
- Insert stat sample at any time during testing
- Windows based operating program.
- Data with Levey - Jennings QC chart
- Reagent and Sample probe with liquid sensor, automatic probe washind avoiding carry over
- Multi active windows makes maintenance and inspecting easily
- Reusable reaction plate / Cuvettes system
- Lamp saving system (Cooling station can work separately after turning off analyzer)



• Operation Interface



• B200 Operation Interface



• B200 Reaction Cuvettes and Aspiration Probe

Technical Specifications

- Sample Capacity** 64 Locations for sample, standard, calibrator and control
- Reagent Capacity** 20/30 reagents with cooling station
- Throughput** 140 tests/hour (Kinetic tests: 40 tests/hour, End Point tests: 200 tests/hour)
- Program Memory** Store over 200 test programs and more than one million test results
- Calibration** 1-6 standards (Optional testing with/without blank-standard-calibrator)
- Optical System** Long life halogen lamp, with 7 high quality filters and two more filter positions. Wavelength ranges from 350nm-700nm. Photometric measuring range: 0-3.0 O.D
- Diluter** 1000 µl, 1.0 µl / step
- Reaction Plate** 96 reusable reaction cuvettes placed in temperature controlled incubator. The temperature control precision is $\pm 0.1^{\circ}\text{C}$
- External Devices** Pentium processor PC, printer, monitor Windows XP/Vista
- Power Requirement** 220/110 Volt 50/60 Hz.
- Dimension & Weight** 80 x 72 x 44 Cm - 45 Kg.

